

GPS Dog Tracker Set-up and Configuration



Contents

Tools Required:	3
Remove Waterproof Plug	4
Remove Retaining Screw	5
Open SIM Compartment.....	6
Slide SIM Retainer Left, then Open.....	7
Place SIM in Device	8
Close SIM Retainer	9
Replace SIM Cover	10
Replace Waterproof Plug	11
Place Device Outside.....	12
Download and Install Software.....	13
Browser Warning:	14
Complete Software Installation	15
Register as a New User	16
Enter your Email.....	17
Enter the Verification Code.....	18
Create a New Password	19
Fill in your Personal Information.....	20
Setup is Complete!.....	21
Log back into the Application	22
Add your Device to the Application.....	23
Enter the IMEI for the Device	24
Continue your Personalization.....	25
Set-up or Change Your Options	26
Enjoy your Carefree Pet Time!.....	27

Tools Required:

Cell Phone



Dog Tracker



Screw Driver



SIM Card



Remove Waterproof Plug



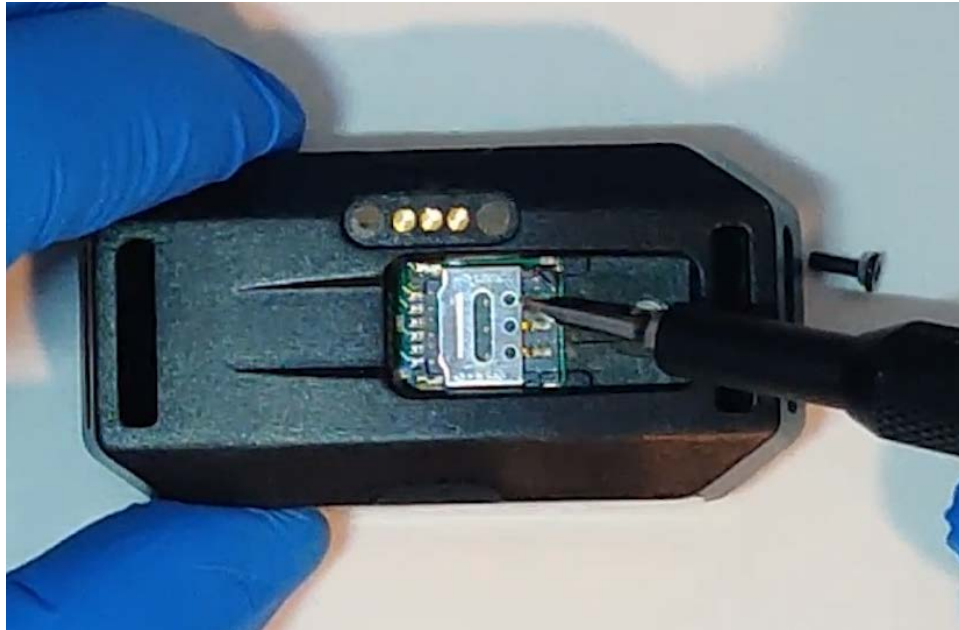
Remove Retaining Screw



Open SIM Compartment

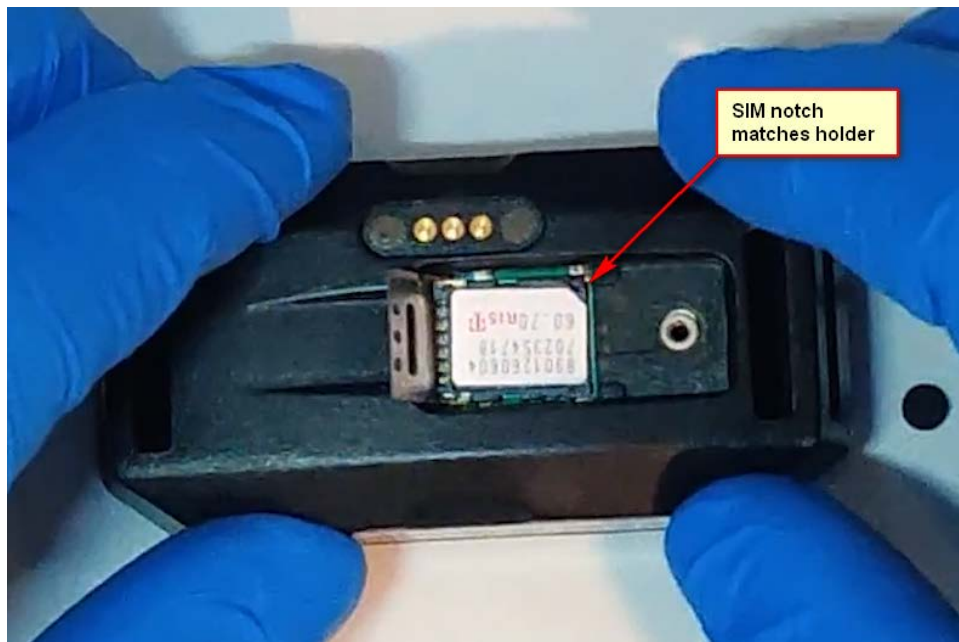
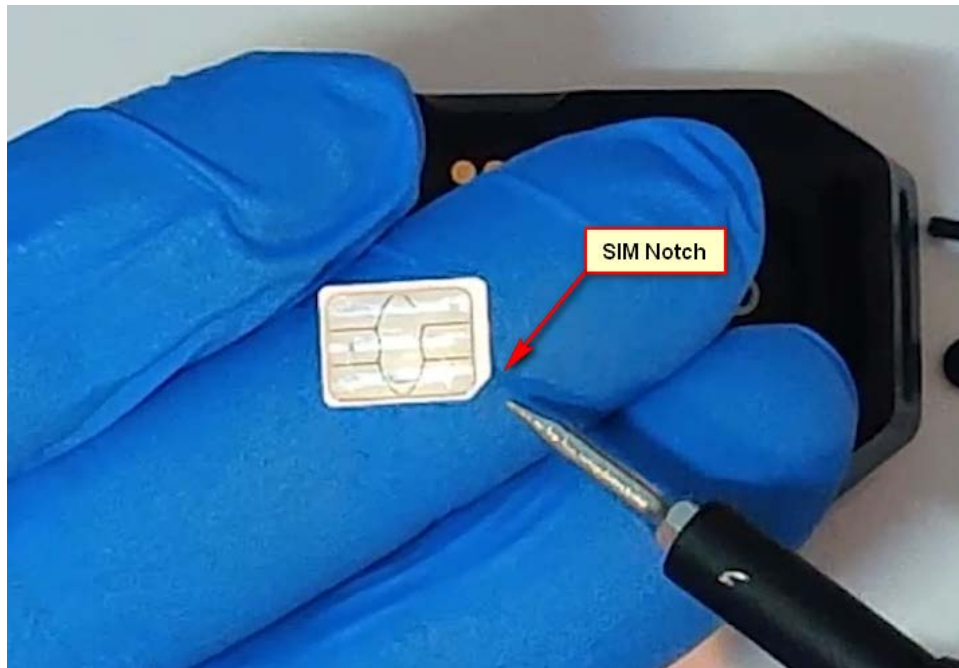


Slide SIM Retainer Left, then Open

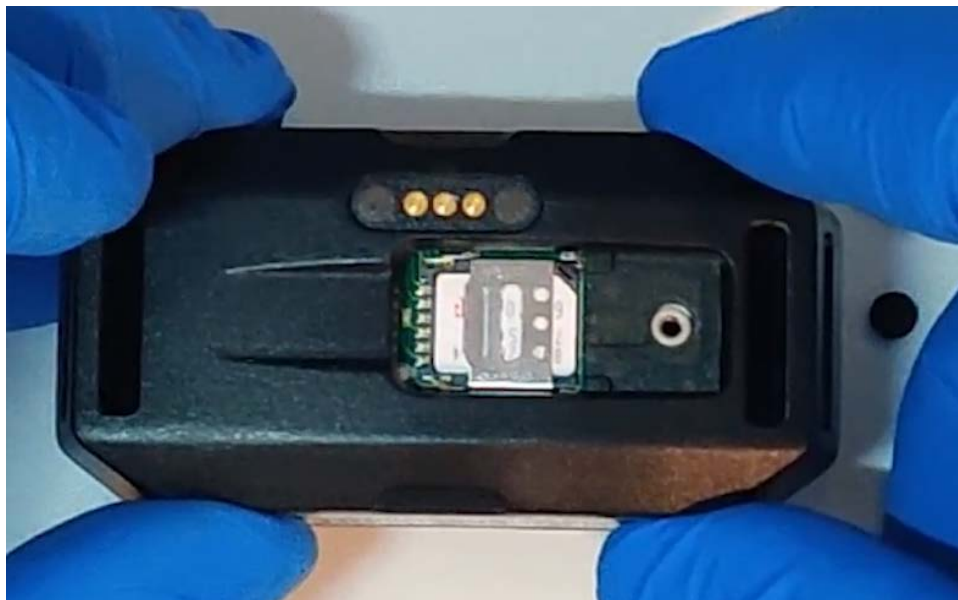


Place SIM in Device

(Ensure Notch is Correctly Positioned)



Close SIM Retainer & Slide Right to Lock



Replace SIM Cover & Retaining Screw



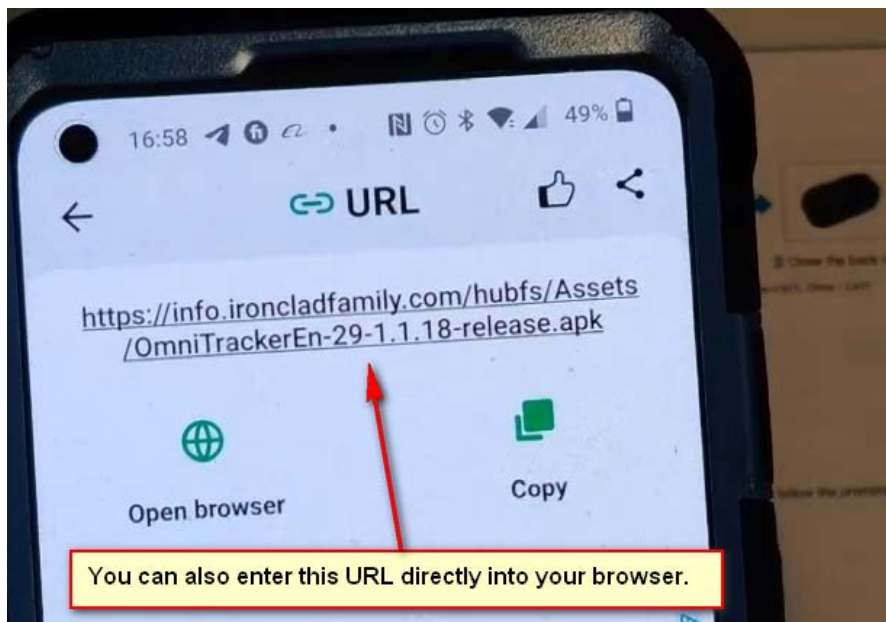
Replace Waterproof Plug



Place Device Outside For 5 Minutes To Acquire Satellites

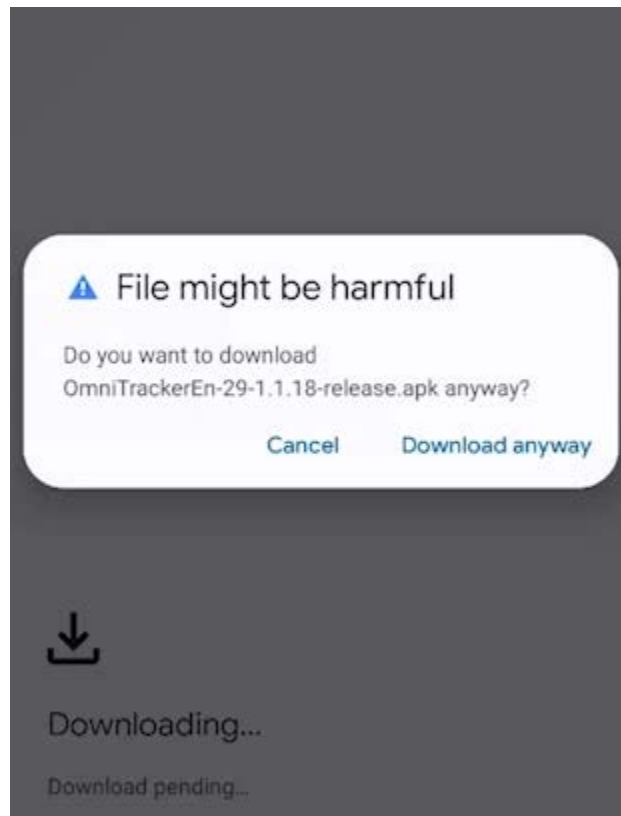


Download and Install Software (Scan QR Code in the Manual for Android or IOS)

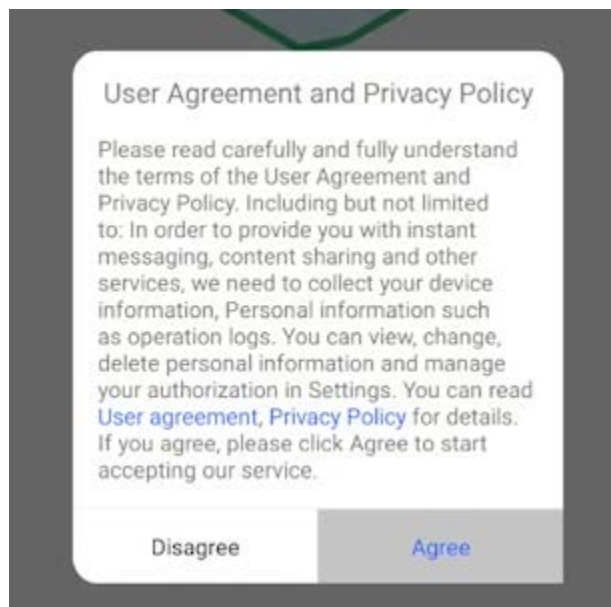
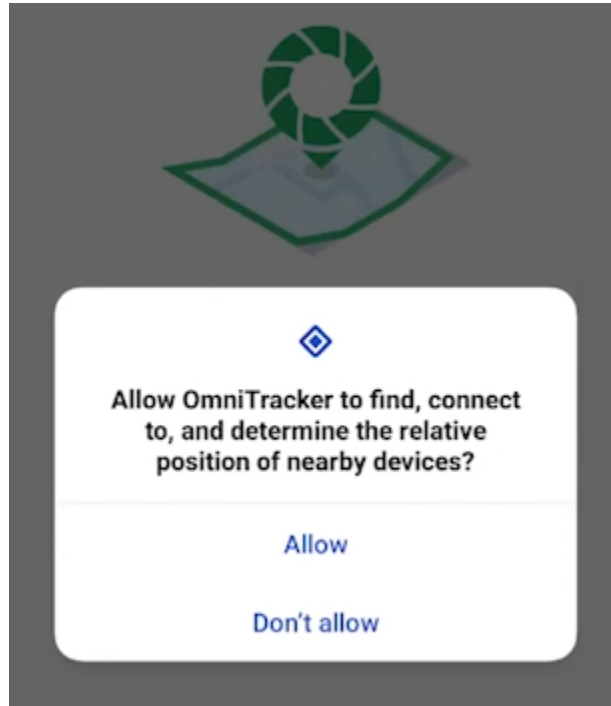


Browser Warning:

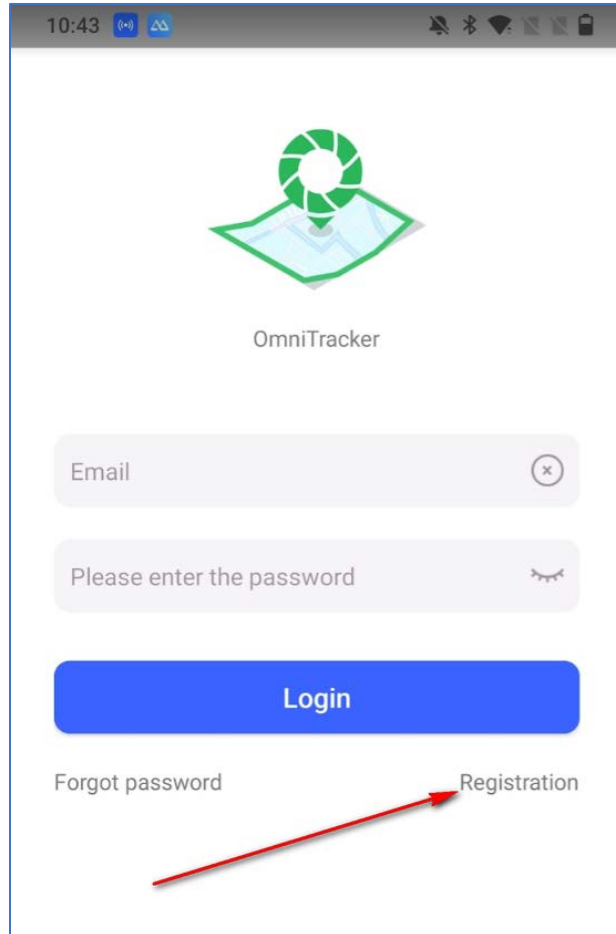
The installation file for the software is located on the IronClad Family server, not in the Google Playstore. You will probably get the following warning because of that. Please choose “Download Anyway” to install the software. You may also need to authorize your phone to install applications that are not in the Playstore.



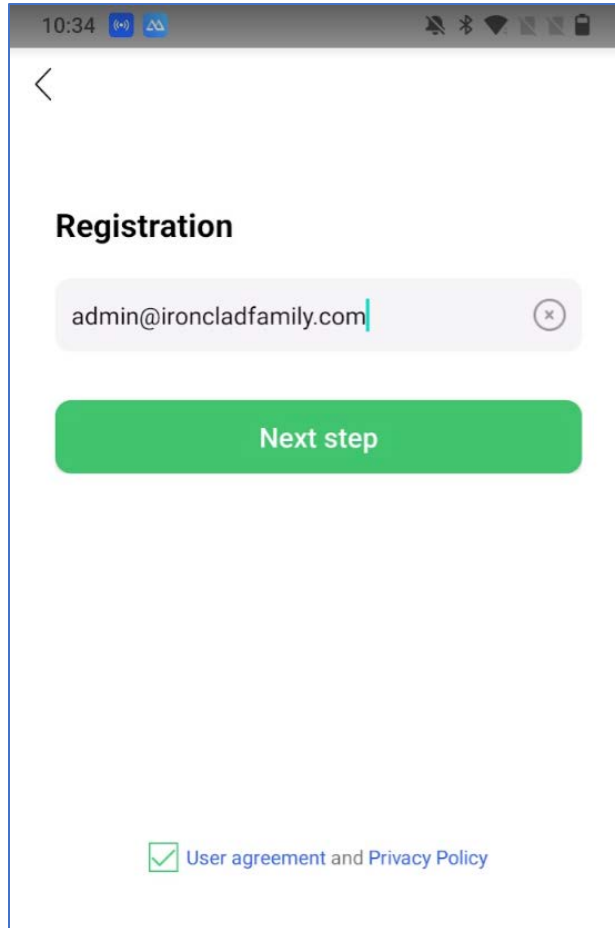
Complete Software Installation



Register as a New User



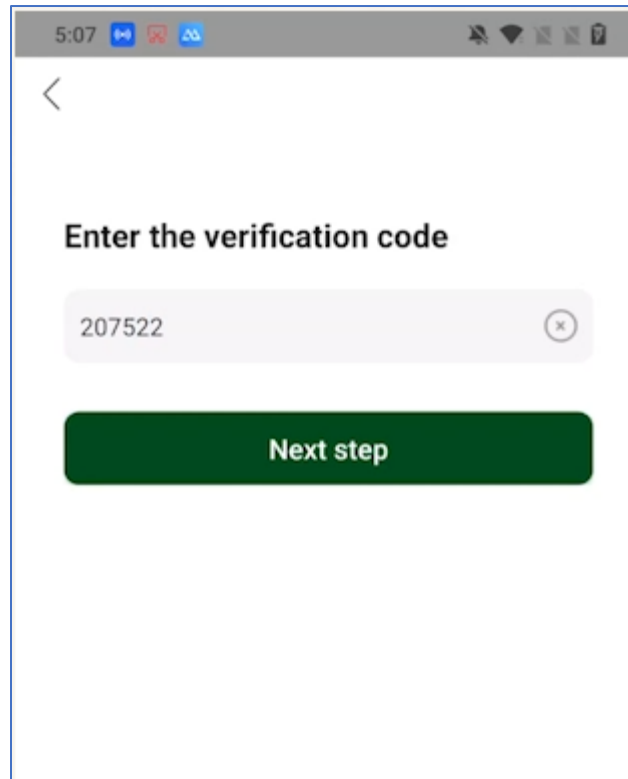
Enter your Email & Agree to User Agreement



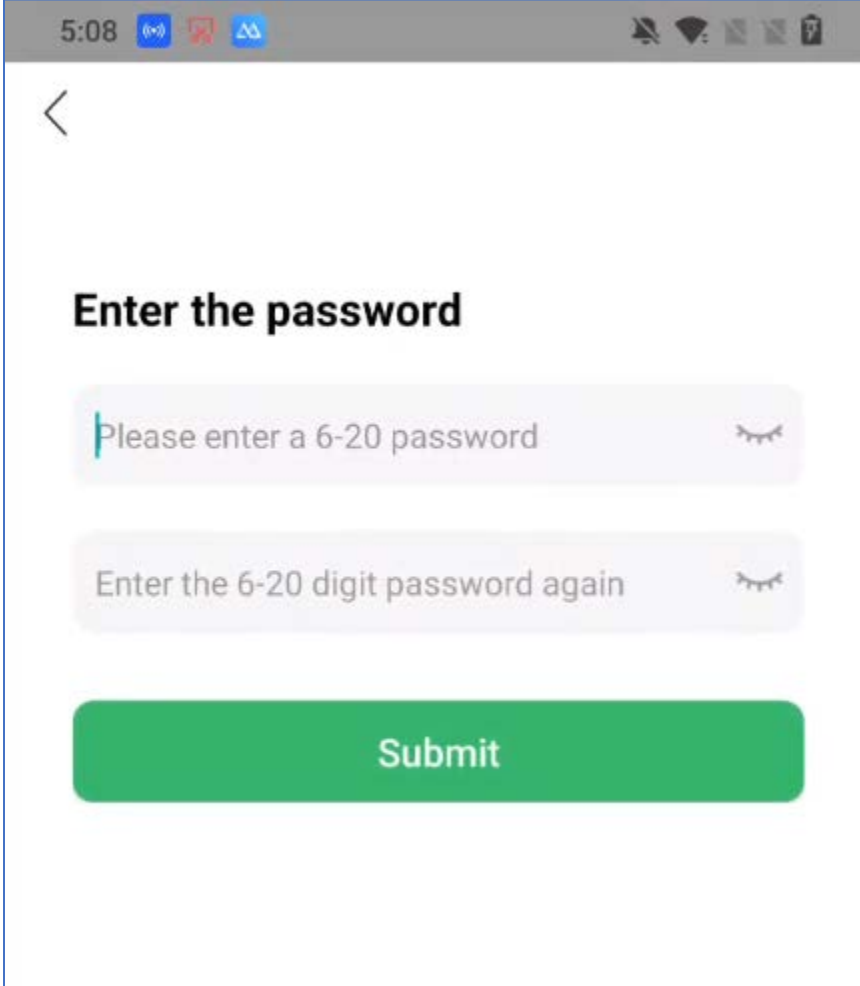
A screenshot of a mobile application registration screen. The status bar at the top shows the time 10:34 and various system icons. The screen has a white background with a back arrow in the top left corner. The title "Registration" is centered. Below it is a text input field containing the email address "admin@ironcladfamily.com" with a clear button (an 'x' in a circle) on the right. A large green button labeled "Next step" is positioned below the input field. At the bottom of the screen, there is a checked checkbox followed by the text "User agreement and Privacy Policy".

Enter the Verification Code

(Sent to the email you entered above.)

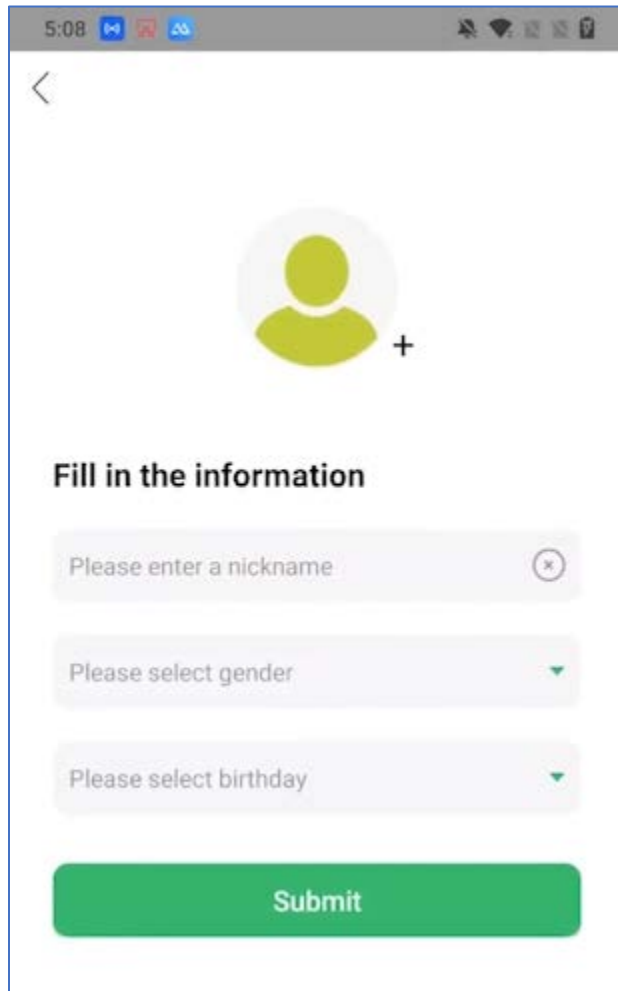


Create a New Password



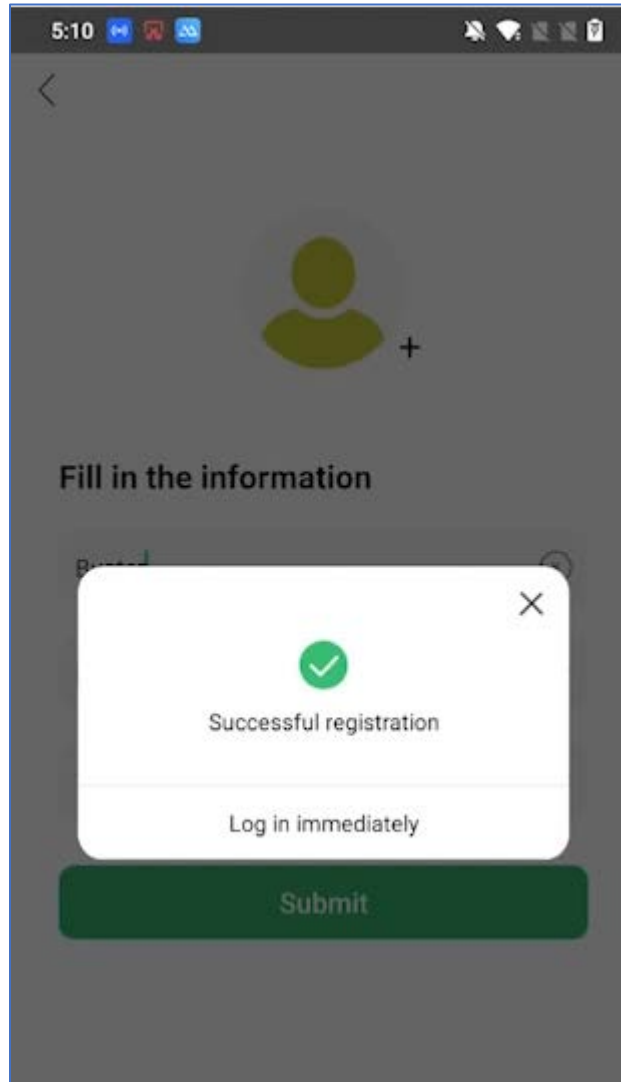
The screenshot shows a mobile application interface for creating a new password. At the top, there is a status bar with the time 5:08 and various system icons. Below the status bar is a back arrow icon. The main heading is "Enter the password". There are two text input fields: the first contains the placeholder text "Please enter a 6-20 password" and the second contains "Enter the 6-20 digit password again". Both fields have a small eye icon to the right, indicating a toggle for password visibility. At the bottom of the form is a large green button labeled "Submit".

Fill in your Personal Information

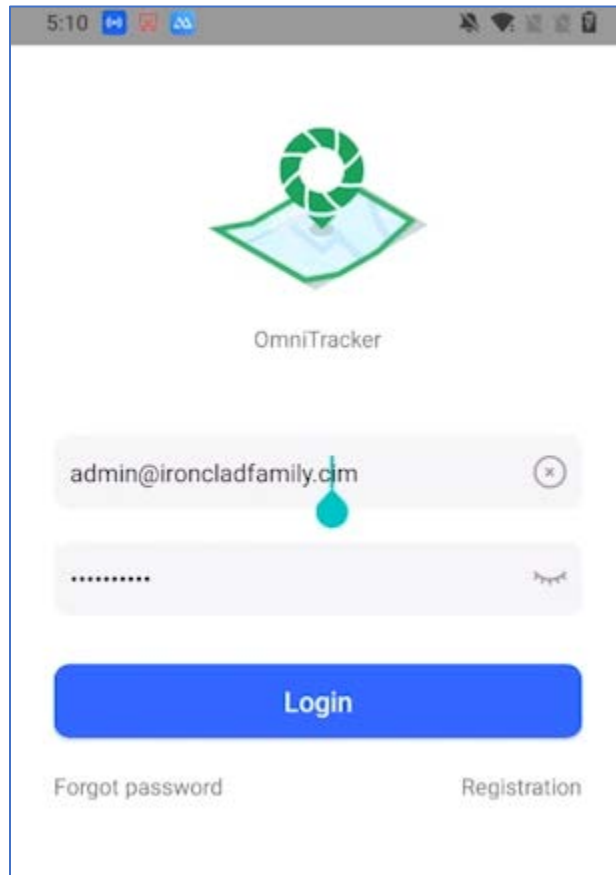


The screenshot shows a mobile application interface for entering personal information. At the top, the status bar displays the time 5:08 and various system icons. Below the status bar is a back arrow icon. In the center, there is a circular profile picture placeholder with a green silhouette and a plus sign. Below this is the heading "Fill in the information". There are three input fields: a text field with the placeholder "Please enter a nickname" and a clear button (x), a dropdown menu with the placeholder "Please select gender", and another dropdown menu with the placeholder "Please select birthday". At the bottom, there is a large green "Submit" button.

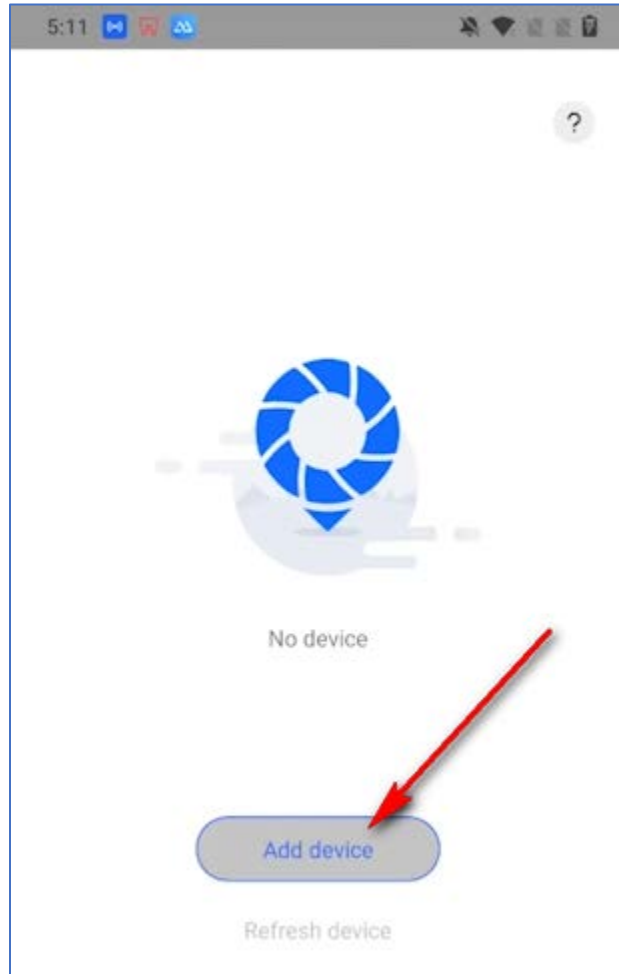
Setup is Complete!



Log back into the Application

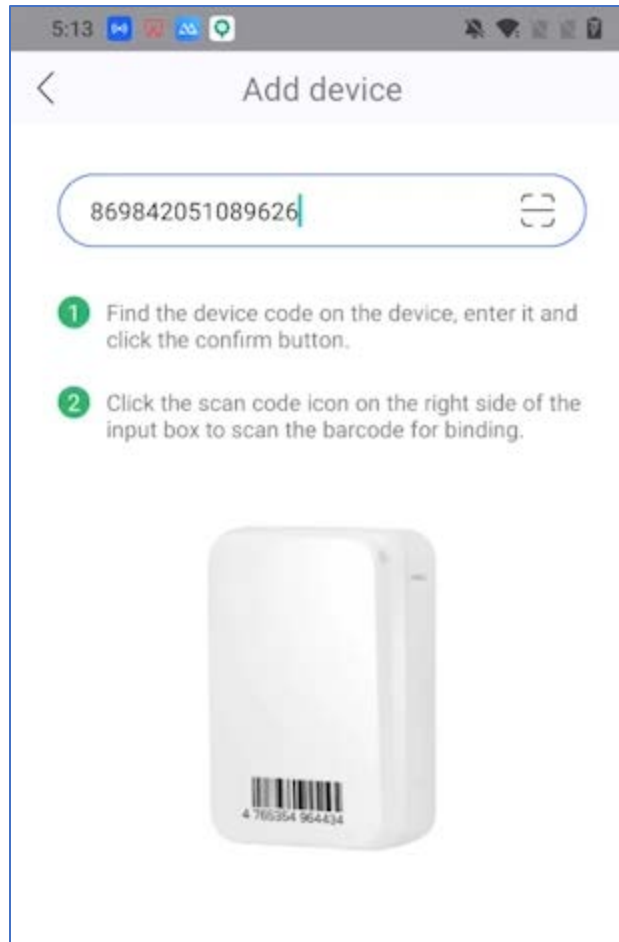


Add your Device to the Application

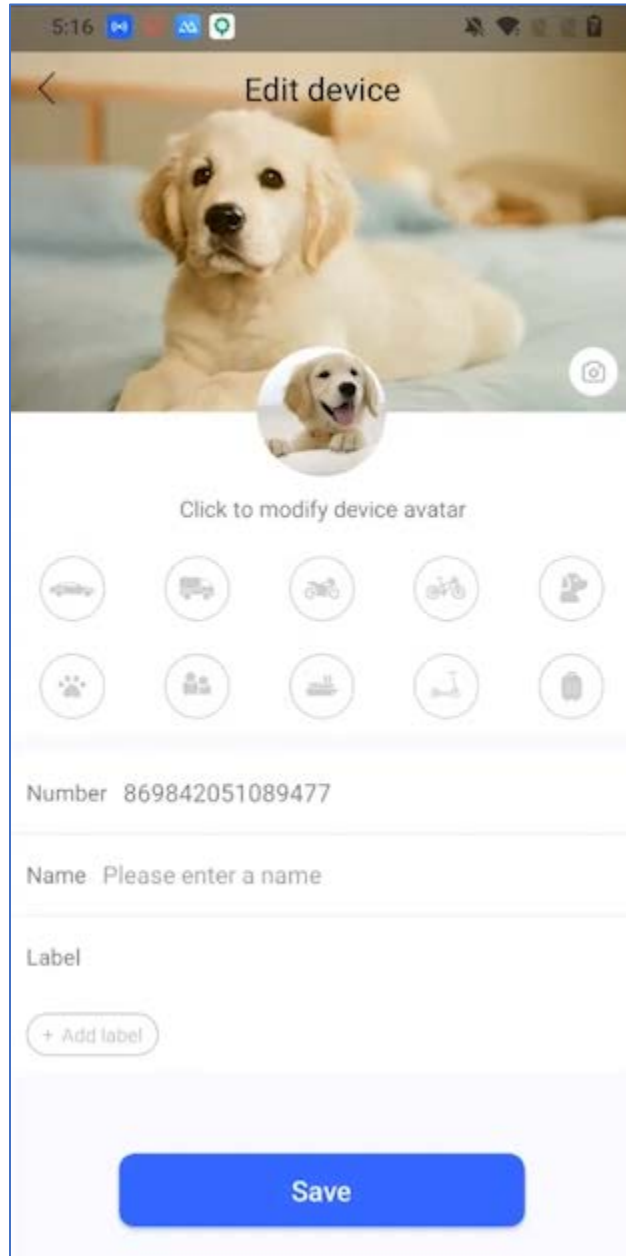


Enter the IMEI for the Device

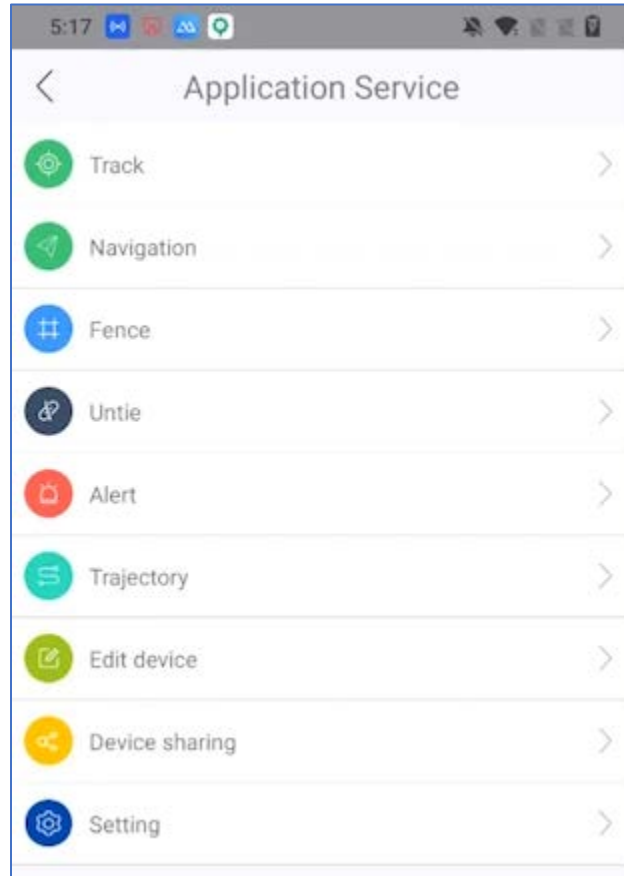
(This number is on the side of the Device)



Continue your Personalization



Set-up or Change Your Options



Enjoy your Carefree Pet Time!



Thank you for your purchase of the Pet Tracker from IronClad Family. We are confident that you will feel better knowing that your pet will never be lost and you will always know where they are.

Please feel free to reach out to us with any questions, comments, or suggestions.

We are always happy to hear from you!

IronClad Family
66 West Flagler Street Suite 900
Miami, FL 33130

786-761-7177

www.ironcladfamily.com

admin@ironcladfamily.com